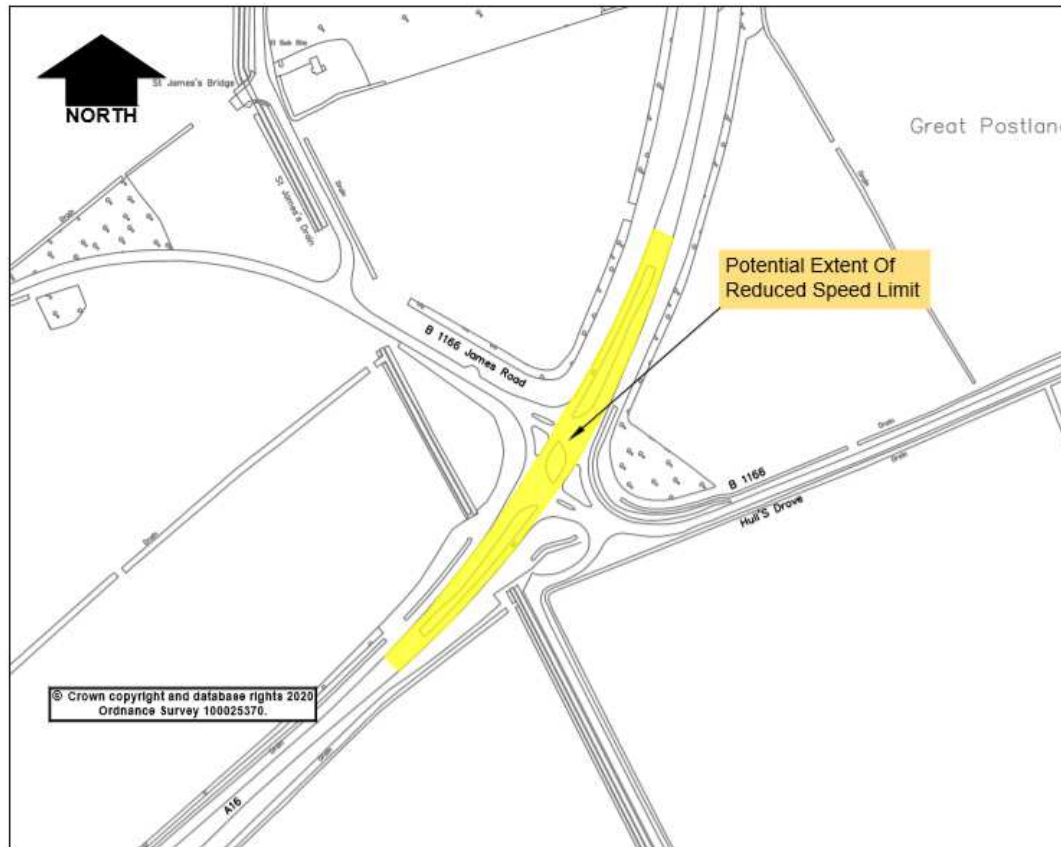


Crowland A16/B1166 Radar
Junction, A16/B1040 junction and
A16 southbound layby

Proposed Experimental traffic order
to prohibit traffic movements

Appendix A



Appendix A:
Proposed Experimental traffic order to
prohibit traffic movements at
Crowland: A16/B1166 Radar Junction and
A16/ B1040 junction and
A16 southbound layby